

FOCUS on Walton Ward Issue 401

Duncan Banks
07399 565677
duncanlibdem@outlook.com

Ben Adewale
07943 886222
ben4libdem@gmail.com

Vicky Mensah
07453 289547
vickymensah97@gmail.com

Covering Kents Hill, Kents Hill Park, Kingston, Brinklow, Walton Hall, Walton, Walton Park, Walnut Tree, Wavendon Gate, Walton Park, Caldecotte, Tilbrook, Browns Wood and Old Farm Park.

Delivered by volunteers.

Printed by Election Workshop, 3 Sheffield St, Manchester M1 2ND. Published and promoted by Duncan Banks on behalf of the Liberal Democrats,



Focus on Vicky Mensah

Vicky Mensah has lived in Milton Keynes for over 24 years, proudly raising her family and serving the community she loves. She has been a passionate supporter of the Liberal Democrats for several years, drawn to the party's commitment to inclusion, fairness, and social justice. She is widely recognised for her positive impact across the city and in 2023 was honoured by Milton Keynes Council as a Black Female Pioneer. Last year she received the Woman of Excellence award from the Church of Pentecost for Outstanding Community Service.



Vicky cleaned the Sweetlands Corner sign at Kents Hill that had become very dirty.

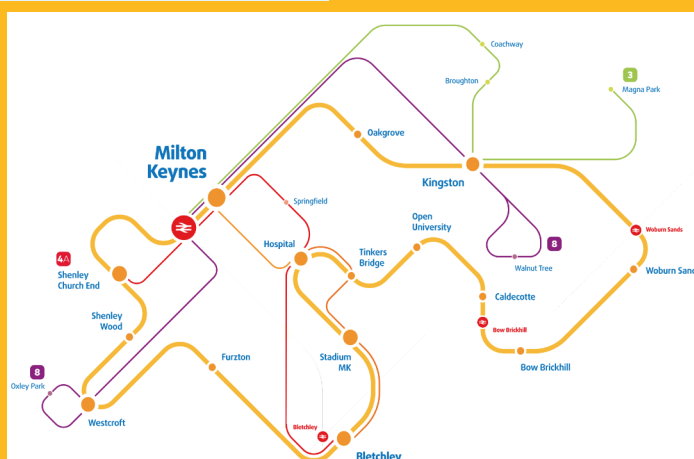


Warning

There have been three reports of motorcycle thefts in our area recently. Report anything suspicious to the police.



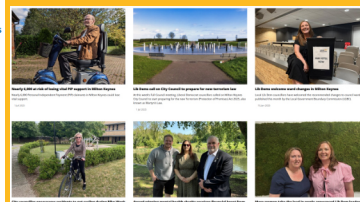
Collapsed drain opposite Hoathy Mews Kents Hill finally repaired by the council.



The new Arriva bus loop service has proven to be a tremendous success with Walton residents, linking with the No 4, 4A, 5, 6, X1, X4, F70 and F77 services and four railway stations, MK Central, Bletchley, Bow Brickhill and Woburn Sands.

Nothing sent to landfill in MK!

Local Lib Dems celebrated in recent months as MK City Council sent no waste to be buried in landfill. This success was built on hard work from Lib Dem councillors over the last 20 years.



Follow the local Liberal Democrat News at

<https://www.mklibdems.co.uk/news>

Survey

Tell us what you want - complete the residents' survey for Walton Ward.



The Walton Ward Team

The Walton team from left to right Cllr Ben Adewale, Vicky Mensah, Cllr Duncan Banks.



Lib Dems - Listening - Caring - Working



Help Needed

Our campaigns are entirely powered by dedicated volunteers, who help deliver our newsletters on their own or neighbouring streets. Can you help us to demand better for Walton Ward?



Please contact **Duncan, Ben or Vicky**.

For more information scan the QR code and follow the link to our Facebook page

Duncan spends half a day with Milton Keynes Council and Suez staff at Kents Hill sorting out the problems.



Suez staff clearing weeds from paving



Vicky reports a broken sign on Hindhead Knoll, Walnut Tree.



Ben reports a particularly bad set of potholes at Highgate Over between Pimpernel Grove and Birdlip Lane, Walnut Tree. The potholes have now been recently marked for filling.

**Don't lose
your voice.**

Register to vote now.

Lib Dems help where YOU Need it

The local Lib Dem team want to hear from you on any issue, big or small, that you'd like help with.

Duncan Banks duncanlibdem@outlook.com

M: 07399 565677

Ben Adewale ben4libdem@gmail.com

M: 07943 886222

Vicky Mensah vickymensah97@gmail.com

M: 07453 289547

or reach all of us at walton@mklibdems.co.uk

Website: www.mklibdems.co.uk and select the Walton Focus Team
or write to: Walton Focus Team, 8 Norton Leys, Wavendon Gate MK7 7TA



The Liberal Democrats may use the information you provide, including your political opinions, to further our objectives and share it with our elected representatives. Any data we gather will be used in accordance with our privacy policy: libdems.org.uk/privacy. You can exercise your rights and withdraw your consent to future communications by contacting us: data.protection@libdems.org.uk or: DPO, Lib Dems, 1 Vincent Square, SW1P 2PN.

Lib Dems - Action and Service All year Round

Printed by Election Workshop, 3 Sheffield St, Manchester M1 2ND. Published and promoted by Duncan Banks, 8 Norton Leys, Wavendon Gate, Milton Keynes MK7 7TA on behalf of the Liberal Democrats.