

FOCUS

Liberal
Democrats

Your regular newsletter from:
Sam Crooks
Nana Ama Ofori-Atta
Wing Tsang

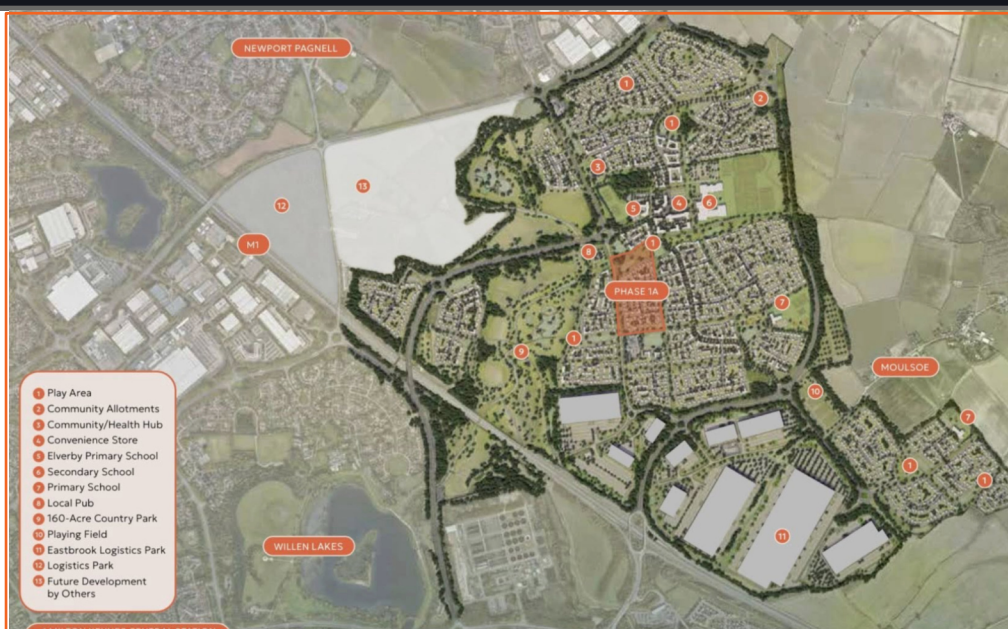


WWW.FOCUSTEAMLIVE.CO.UK

Development of Milton Keynes East.

Here is a map showing the first phase of the MK East development. Plot number 3 (the Health Centre) and plot number 5 (Elverby Primary School) have already been completed.

Plot number 13 is Newport Vale, located on Willen Road.



Three months of litter picking success.

Our monthly community litter picks have been running for three months, and we are grateful to everyone who has given their time to help. The next litter pick will take place at Brooklands Square, 10:30 am on Saturday 13 December. A special thank you to Josh (gentleman wearing the high-vis jacket), who goes above and beyond by litter picking in his spare time and keeping an eye on problem areas.



Lorries have finally left Fen Street!

After months of disruption caused by lorries parking along Broughton and Fen Street, residents can now enjoy some much-needed peace.

GLP - the owners of Magna Park have installed cameras and signage to deter illegal parking. Drivers who failed to comply were issued fines, leading to the successful removal of the vehicles.



Waste contamination.

We've had a lot of complaints recently about the big recycling euro-bins serving flats not being emptied. This is because they're "contaminated" - jargon for recyclable and non-recyclable items being mixed up in the same bin. We're contacting all of the flat management companies in our area asking them to get this sorted so that the Council can start emptying the bins again.



Congratulations for Nana!

Congratulations to Nana on the remarkable success of this year's Black History Month celebrations at centre:mk. The two-day event was a vibrant tribute to Black heritage, culture, and creativity, uniting the community through music, art, fashion, food, and thought-provoking discussions. Her dedication and vision continue to make Milton Keynes a city that recognises and honours the rich contributions of the Black community.



Dog waste is a problem.

While picking up litter around Brooklands Pavilion, Nana noticed a lot of dog mess left on the ground. With so many families and children using the area, she urges dog owners to clean up after their pets.

Running daily with her daughter's dog, Iris, Nana always does so and encourages others to do the same. Keeping the area clean helps ensure it remains a safe and welcoming space for everyone.

Dates for your diary

- **Brooklands Farm Primary School Lantern Festival:** Fen Street campus on Friday 28 November at 6pm.
- **Parish Council Christmas tree and carols:** Starting from 5pm to 7pm on Saturday 29 November in Broughton Pavilion.
- **BBCC:** Fancy playing a part in making a difference where you live? The Broughton & Brooklands Community Connectors (BBCC) hold regular monthly meetings to discuss local issues, share updates, and plan activities across the area. All residents are warmly welcome to join and get involved. Find out more via: <https://mkbcc.org.uk/>
- **Speak to your FOCUS team:** On the last Saturday of every month, we'll be at the Broughton Pavilion from 2:00 - 3:30pm, and Brooklands Pavilion from 4:00 - 5:30pm. But no November surgery in the Broughton Pavilion due to the Parish Council Christmas event. However we'll still be in Brooklands at 4 pm.



Nana Ama Ofori-Atta



Sam Crooks



Wing Tsang

07803 036 656

focusteam@live.co.uk

<https://www.focusteamlive.co.uk>



/focusteamlive

ONE PEOPLE
ONE COMMUNITY
ONE CITY